



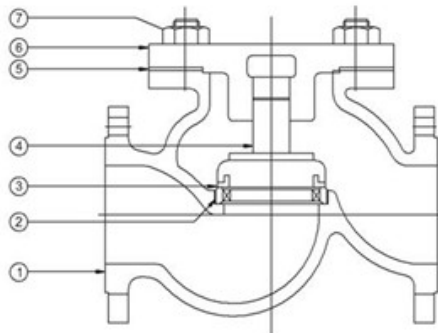
CAST IRON HORIZONTAL CHECK VALVES- EN 12334

PN 10, PN 16

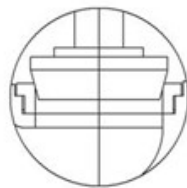
SPECIFICATIONS

RIGHT ANGLE PATTERN, BOLTED COVER, FLANGES AS PER BS 4504 DIN 2532 OR 2533- AS APPLICABLE

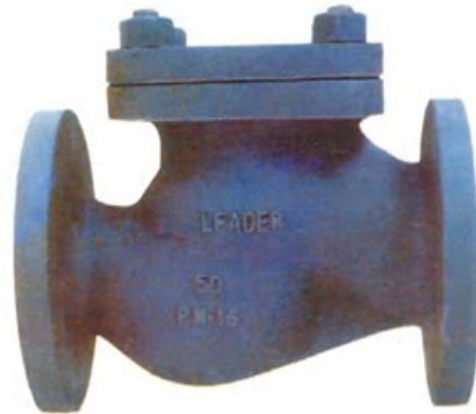
PRESSURE-TEMPERATURE RATINGS



FLAT TYPE DISC



PLUG TYPE DISC



STANDARD MATERIAL COMBINATION

PART NO	QTY.	DESCRIPTION	MATERIALS	
			Cu-ALLOY TRIM	S.S TRIM
1	1	BODY	C.I TO EN 1561 Gr. GJL200	C.I TO EN 1561 Gr. GJL200
2	1	BODY SEAT RING	G.M. TO EN 1982 Gr. CC491K	S.S TO BS 970 Gr. 410 S21/ASTM A182 Gr. F6a OR THEIR Eq.
3	1	WITH INTEGRAL FACE	G.M. TO EN 1982 Gr. CC491K	S.S TO BS 970 Gr. 410 S21/ASTM A182 Gr. F6a/ASTM A217 Gr. Ca15 OR THEIR Eq.
		WITH SEPARATE FACING RING	C.I TO EN 1561 Gr. GJL200	C.I TO EN 1561 Gr. GJL200
4	1	DISC FACING RING	G.M. TO EN 1982 Gr. CC491K	S.S TO BS 970 Gr. 410 S21/ASTM A182 Gr. F6a OR THEIR Eq.
5	1	GASKET	SUITABLE FOR THE DUTY	SUITABLE FOR THE DUTY
6	1	COVER	C.I TO EN 1561 Gr. GJL200	C.I TO EN 1561 Gr. GJL200
7	1	STUDS & NUTS	CARBON STEEL TO BS 916	CARBON STEEL TO BS 916

PRESSURE/ TEMPERATURE RATINGS TO BS 5153

NOMINAL PRESSURE	MAX. PERMISSIBLE GAUGE WORKING PRESSURE °C				
	-10 TO 120 °C	150 °C	180 °C	200 °C	220 °C
PN 10	10 bar	9.2 bar	8.5 bar	8.0 bar	8.0 bar
PN 16	16 bar	14.8 bar	13.9 bar	13.0 bar	13.0 bar

NOTE: The above data is subject to change without notice due to our continuing product improvement program.

(01)



JAYARAJ PIPE TRADERS

48/425 Q, JAYARAJ HOUSE, ELAMAKKARA, COCHIN 682 026
 TEL. No. 0484 253 0785, 240 8008, 240 8009. FAX: 0484 253 0785
 E-mail: jaypipescochin@gmail.com, sales@jayarajpipes.com
 Web: www.jayarajpipes.com



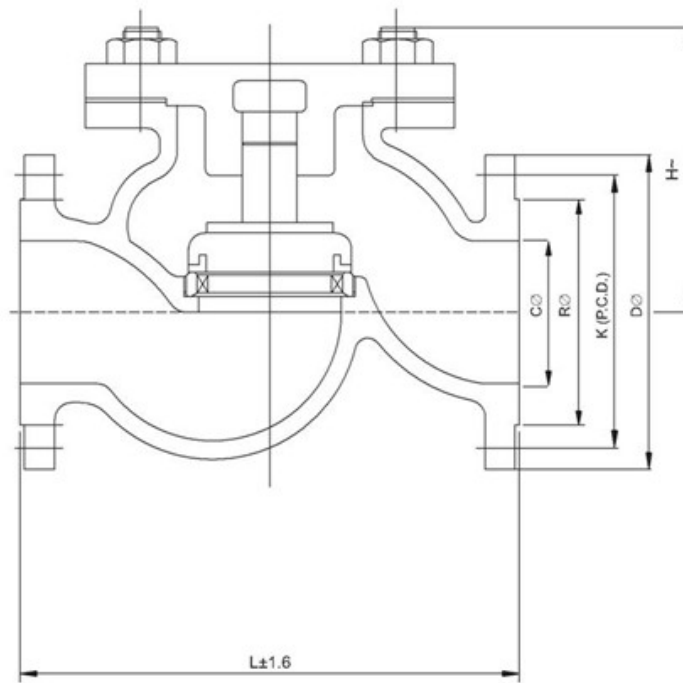


FIG. NO. CI019

CATALOGUE FIG. NOS.															
ITEM		SIZES			FIG. NO.			END DETAILS							
CAST IRON HORIZONTAL CHECK VALVE- BS PN 16 (S.S. TRIM)		≤ 150mm			CI-019 RF			FLANGED ENDS TO DIN 2533 PN-16 RF							
DIMENSIONAL DATA															
DN NPS	15 ½	20 1/4	25 1	32 1-1/4	40 1 ½	50 2	65 2-½	80 3	100 4	125 5	150 6	200 8	250 10	300 12	
L(RF)	130	150	160	180	200	230	290	310	350	400	480	600	730	850	
H	85	85	90	100	115	130	160	170	190	210	282	310	325	380	
C∅	15	20	25	32	40	50	65	80	100	125	150	200	250	300	
R∅	45	58	68	78	88	102	122	138	158	188	212	268	320	370	
K (P.C.D.)	65	75	85	100	110	125	145	160	180	210	240	295	350	400	
D∅	95	105	115	140	150	165	185	200	220	250	285	340	395	445	
ITEM CODE NOS.	Aprox.Wt. Δ	4.000	5.080	6.100	10.42	13.90	16.70	28.07	42.10	58.50	87.10	117.30	205.00	345.00	516.00
	Pn16 (S.S.TRIM)	CI 019 D	CI 019 F	CI 019 G	CI 019 H	CI 019 I	CI 019 J	CI 019 K	CI 019 L	CI 019 N	CI 019 O	CI 019 P	-	-	-
TEST PRESSURES															
NOMINAL PRESSURE RATING		SHELL TEST (HYDROSTATIC)			SEAT TEST (HYDROSTATIC)			STANDARD NO.							
PN 10		15 bar			10 bar			BS 5153							
PN 16		24 bar			16 bar										

NOTE: The above data is subject to change without notice due to our continuing product improvement program. (Δ WEIGHT GIVEN IN KGS)



JAYARAJ PIPE TRADERS

48/425 Q, JAYARAJ HOUSE, ELAMAKKARA, COCHIN 682 026
 TEL. No. 0484 253 0785, 240 8008, 240 8009. FAX: 0484 253 0785
 E-mail: jaypipescochin@gmail.com, sales@jayarajpipes.com
 Web: www.jayarajpipes.com

