

Outside Screw & Yoke Type Rising Stem

- Sizes 1 1/2" to 16" Class-150
- Sizes 1 1/2" to 12" Class-300
- Sizes 1 1/2" to 12" Class-600
- Sizes 2" to 12" Class-900
- Sizes 2" to 12" Class-1500
- Sizes 2" to 8" Class-2500

TRIM MATERIAL COMBINATION (ON REQUEST)

| Trim No. | Seat ring Face Part No.2 | Disc Seat Face Part No.4 | Stem Part No.6 | Backseat Bush Part No.7 | Lantern Ring Part No.20 |
|----------|--------------------------|--------------------------|----------------|-------------------------|-------------------------|
| 1 | F6a/13%Cr. | F6a/13%Cr. | F6a/AISI410 | F6a/AISI410 | F6a/AISI410 |
| 2 | F304 | F304 | F304/AISI304 | F304/AISI304 | F304/AISI304 |
| 5 | STELLITE | STELLITE | F6a/AISI410 | F6a/AISI410 | F6a/AISI410 |
| 8 | STELLITE | F6a/13%Cr. | F6a/AISI410 | F6a/AISI410 | F6a/AISI410 |
| 9 | MONEL | MONEL | MONEL | MONEL | MONEL |
| 10 | F316 | F316 | F316/AISI316 | F316/AISI316 | F316/AISI316 |
| 13 | ALLOY 20 | ALLOY 20 | ALLOY 20 | ALLOY 20 | ALLOY 20 |

OTHER TRIM COMBINATION OF BS 1873 CAN BE PROVIDED ON REQUEST. LANTERN RING CAN BE PROVIDED IF REQUIRED, EXCEPT FOR CL-150.

STANDARD MATERIAL COMBINATION

| P. No | PART NAME | Carbon steel to ASTM | | Alloy steel to ASTM | | | | | Stainless steel to ASTM | | | |
|-------|--------------------------|---|----------------------|---------------------|-----------------------|-----------------------|-----------------------|-----------------------|-------------------------|----------------------|----------------------|----------------------|
| | | Type WCB | Type LCB | Type WC1 | Type WC6 | Type WC9 | Type C5 | Type C12 | Type CF8 | Type CF8M | Type CF3 | Type CF3M |
| 1 | BODY | A216 WCB | A352 LCB | A217 WC1 | A217 WC6 | A217 WC9 | A217 C5 | A217 C12 | A351 CF8 | A351 CF8M | A351 CF3 | A351 CF3M |
| 3 | THRUST PLATE | HARDENED STEEL | | | | | | | | | | |
| 5 | DISC NUT | A182 F6a | F304 | A182 F6a | A182 F6a | A182 F6a | A182 F6a | A182 F6a | A276 F304 | A182 F316 | A182 304L | A182 316L |
| 8 | GASKET | Spiral wound Stainless steel Graphoil filled | | | | | | | | | | |
| 9 | BONNET | A216 WCB | A352 LCB | A217 WC1 | A217 WC6 | A217 WC9 | A217 C5 | A217 C12 | A315 CF8 | A351 CF8M | A351 CF3 | A351 CF3M |
| 10 | BODY BONNET STUDS & NUTS | A193 B7 A194 2H | A320 L7 A194 4 | A193 B7 A194 2H | A193 B16 A194 4 | A193 B16 A194 4 | A193 B16 A194 4 | A193 B16 A194 4 | A193 B8 A194 8 | A193 B8 A194 8M | A193 B8 A194 8 | A193 B8 A194 8M |
| 11 | PACKING | To Suit service conditions | | | | | | | | | | |
| 12 | GLAND | A182 F6a | A182 F6a | A182 F6a | A182 F6a | A182 F6a | A182 F6a | A182 F6a | A276 F304 | A182 F316 | A182 304L | A182 316L |
| 13 | GLAND FLANGE | A105 | A350 LF2 | A105 | A105 | A105 | A105 | A105 | A351 CF8 | A351 CF8M | A351 CF3 | A351 CF3M |
| 14 | GLAND STUDS & NUTS | A193 B7 A194 2H | A320 L7 A194 Gr.4 | A193 B7 A194 2H | A193 B16 A194 Gr.4 | A193 B16 A194 Gr.4 | A193 B16 A194 Gr.4 | A193 B16 A194 Gr.4 | A193 B8 A194Gr.8 | A193 B8 A194 Gr.8 | A193 B8 A194 Gr.8 | A193 B8 A194 Gr.8 |
| 15 | YOKE BUSH | Al. Bronze BS 1982 CC333G or Ni-resist to A4390D2 | | | | | | | | | | |
| 16 | HANDWHEEL | DI A536 80-55-06 OR MI 1S2108 BM290/ASTMA338 | | | | | | | | | | |
| 17 | WASHER | STEEL | | | | | | | | | | |
| 18 | HANDWHEEL RETAINING NUT | STEEL | | | | | | | | | | |
| 19 | LOCKING WASHER | STEEL | | | | | | | | | | |

TEST PRESSURE

| CLASS | SHELL TEST (HYDROSTATIC) | | SEAT TEST | | | |
|-------|--------------------------|------------|-------------|------------|-----------|-----------|
| | | | HYDROSTATIC | | PNEUMATIC | |
| | 150 | 30 Bar g | 435 Psi g | 22 Bar g | 319 Psi g | 6.9 bar |
| 300 | 76 Bar g | 1102 Psi g | 55 Bar g | 780 Psi g | 6.9 bar | 100 Psi g |
| 600 | 150 Bar g | 2175 Psi g | 110 Bar g | 1595 Psi g | 6.9 bar | 100 Psi g |
| 900 | 231 Bar g | 3350 Psi g | 169 Bar g | 2451 Psi g | 6.9 bar | 100 Psi g |
| 1500 | 384 Bar g | 5568 Psi g | 281 Bar g | 4075 Psi g | 6.9 bar | 100 Psi g |
| 2500 | 639.4 Bar g | 9372 Psi g | 468 Bar g | 6785 Psi g | 6.9 bar | 100 Psi g |

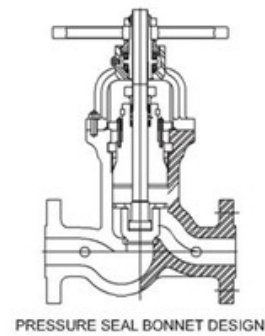
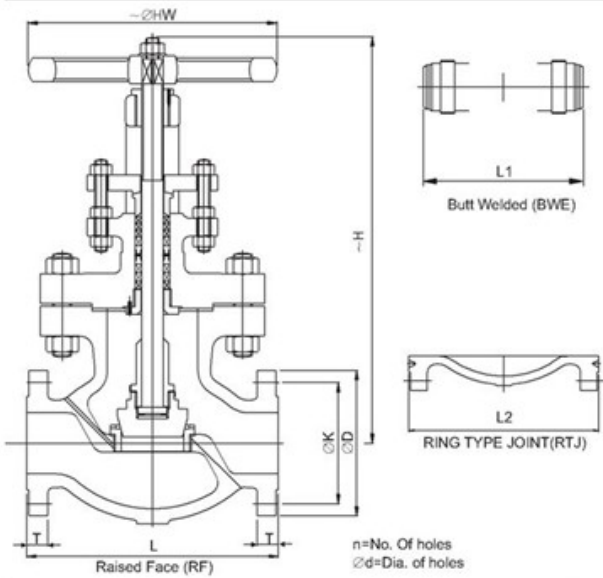
NOTE: The above data is subject to change without notice due to our continuing product improvement program.





CAST STEEL GLOBE VALVES- BS 1873

CLASS-150,300,600,900,1500 & 2500



NOTES:-

- FOR CLASS 900,1500 & 2500 PRESSURE SEAL BONNET VALVE CAN ALSO BE SUPPLIED ON REQUEST.
 - CLASS 150 & 300 FLANGES ARE FURNISHED WITH 1.6mm RAISED FACE WHICH IS INCLUDED IN THE MIN FLANGE THICKNESS (T). CLASS 600,900,1500 & 2500 FLANGES ARE FURNISHED WITH 6.4mm RAISED FACE WHICH IS ADDITIONAL TO THE FLANGE THICKNESS (B).
- *With enclosed type bevel gear arrangement**

DIMENSIONAL DATA CLASS-150

| DN | 40 | 50 | 65 | 80 | 100 | 125 | 150 | 200 | 250 | 300 | 350 | 400 | | | | | | | |
|-------------|------|-------|-------|-------|-------|-------|-------|-------|-------|-------|-------|-------|--|--|--|--|--|--|--|
| NPS | 1 ½ | 2 | 2 ½ | 3 | 4 | 5 | 6 | 8 | 10 | 12 | 14 | 16 | | | | | | | |
| L | 165 | 203 | 216 | 241 | 292 | 356 | 406 | 495 | 622 | 698 | 787.4 | 914 | | | | | | | |
| L1 | 165 | 203 | 216 | 241 | 292 | 356 | 406 | 495 | 622 | 698 | 787.4 | 914 | | | | | | | |
| φD | 127 | 152.5 | 178 | 190.5 | 229 | 254 | 279.5 | 343 | 406.5 | 483 | 533.4 | 597 | | | | | | | |
| T | 14.2 | 15.8 | 17.5 | 19.1 | 24 | 24 | 25.4 | 28.5 | 30.5 | 32 | 35 | 36.5 | | | | | | | |
| K(PCD) | 98.5 | 120.7 | 139.7 | 152.4 | 190.5 | 215.9 | 241.3 | 298.5 | 361.9 | 431.8 | 476.3 | 539.8 | | | | | | | |
| n | 04 | 04 | 04 | 04 | 08 | 08 | 08 | 08 | 12 | 12 | 12 | 16 | | | | | | | |
| φd | 15.7 | 19.1 | 19.1 | 19.1 | 19.1 | 22.3 | 22.3 | 22.3 | 25.4 | 25.4 | 28.6 | 28.6 | | | | | | | |
| H | 295 | 330 | 422 | 445 | 490 | 570 | 600 | 642 | 770 | 825 | 1180 | 1220 | | | | | | | |
| φHW | 203 | 203 | 229 | 229 | 254 | 254 | 304 | 457 | 559 | 635 | 450 | 450 | | | | | | | |
| Aprox.wt. * | 16.5 | 25.5 | 35 | 44 | 77 | 102 | 126 | 220 | 337 | 564 | 803 | 851 | | | | | | | |

DIMENSIONAL DATA CLASS-300

| DN | 40 | 50 | 65 | 80 | 100 | 125 | 150 | 200 | 250 | 300 | | | | | | | | | |
|-------------|-------|-------|-------|-------|-------|-------|-------|-------|-------|-------|--|--|--|--|--|--|--|--|--|
| NPS | 1 ½ | 2 | 2 ½ | 3 | 4 | 5 | 6 | 8 | 10 | 12 | | | | | | | | | |
| L | 229 | 267 | 292 | 318 | 356 | 401 | 444 | 559 | 622 | 711 | | | | | | | | | |
| L1 | 229 | 267 | 292 | 318 | 356 | 401 | 444 | 559 | 622 | 711 | | | | | | | | | |
| φD | 155.5 | 165.1 | 190.5 | 209.6 | 254 | 279.5 | 317.5 | 381 | 444.5 | 521 | | | | | | | | | |
| T | 20.6 | 22.4 | 25.4 | 28.5 | 32 | 35.1 | 36.6 | 41.2 | 48 | 50.8 | | | | | | | | | |
| K(PCD) | 114.3 | 127 | 149.3 | 168.1 | 200.1 | 234.9 | 269.7 | 330.2 | 387.3 | 450.8 | | | | | | | | | |
| n | 04 | 08 | 08 | 08 | 08 | 08 | 12 | 12 | 16 | 16 | | | | | | | | | |
| φd | 22.3 | 19.1 | 22.3 | 22.3 | 22.3 | 22.3 | 22.3 | 25.4 | 28.6 | 31.8 | | | | | | | | | |
| H | 360 | 400 | 420 | 515 | 590 | 680 | 680 | 820 | 835 | 1000 | | | | | | | | | |
| φHW | 216 | 216 | 254 | 254 | 356 | 406 | 457 | 508 | 559 | 864 | | | | | | | | | |
| Aprox.wt. * | 26 | 37.5 | 60 | 68.5 | 103 | 164 | 221 | 318 | 572 | 679 | | | | | | | | | |

Note : Add 3mm in face to face for RTJ flanges ends.

NOTE: The above data is subject to change without notice due to our continuing product improvement program. (*WEIGHT GIVEN IN KGS)



JAYARAJ PIPE TRADERS

48/425 Q, JAYARAJ HOUSE, ELAMAKKARA, COCHIN 682 026
 TEL. No. 0484 253 0785, 240 8008, 240 8009. FAX: 0484 253 0785
 E-mail: jaypipescochin@gmail.com, sales@jayarajpipes.com
 Web: www.jayarajpipes.com





| DIMENSIONAL DATA CLASS-600 | | | | | | | | | | |
|----------------------------|------|-------|-------|-------|-------|-------|-------|-------|---------|--|
| DN | 50 | 65 | 80 | 100 | 125 | 150 | 200 | 250 | 300 | |
| NPS | 2 | 2 ½ | 3 | 4 | 5 | 6 | 8 | 10 | 12 | |
| L | 292 | 330 | 356 | 432 | 508 | 559 | 660 | 787 | 838.2 | |
| L1 | 292 | 330 | 356 | 432 | 508 | 559 | 660 | 787 | 838.2 | |
| φD | 165 | 190 | 210 | 273 | 330 | 356 | 419 | 508 | 558.8 | |
| T | 25.4 | 28.6 | 31.8 | 38.1 | 44.4 | 47.6 | 55.6 | 63.5 | 66.5 | |
| K(PCD) | 127 | 149.2 | 168.3 | 215.9 | 266.7 | 292.1 | 349.2 | 431.8 | 489 | |
| n | 08 | 08 | 08 | 08 | 08 | 12 | 12 | 16 | 20 | |
| φd | 19 | 22.2 | 22.2 | 25.4 | 28.6 | 28.6 | 31.8 | 34.9 | 35 | |
| H | 400 | 515 | 530 | 645 | 750 | 800 | 830 | 860 | 884 | |
| φHW | 254 | 305 | 305 | 457 | 508 | 599 | 610 | 650 | 650 | |
| Aprox.wt. ^ | 42.5 | 66 | 88 | 164.5 | --- | 340 | 495 | 834 | 996.750 | |

| DIMENSIONAL DATA CLASS-900 | | | | | | | | | |
|----------------------------|-------|-------|-------|-------|-------|-------|-------|--|--|
| DN | 50 | 80 | 100 | 150 | 200 | 250 | 300 | | |
| NPS | 2 | 3 | 4 | 6 | 8 | 10 | 12 | | |
| L | 368 | 381 | 457.5 | 610 | 736.6 | 838 | 965 | | |
| L1 | 368 | 281 | 457.5 | 610 | 736.6 | 838 | 965 | | |
| φD | 216 | 241.3 | 292.1 | 381 | 469.9 | 546.1 | 609.6 | | |
| T | 38.1 | 38.1 | 44.5 | 55.6 | 63.5 | 69.8 | 79.2 | | |
| K(PCD) | 165.1 | 190.5 | 234.5 | 317.5 | 393.7 | 469.9 | 533.4 | | |
| n | 08 | 08 | 08 | 12 | 12 | 16 | 20 | | |
| φd | 25.4 | 25.4 | 31.8 | 31.8 | 38.1 | 38.1 | 38.1 | | |
| H | 620 | 690 | 840 | 1145 | 1145 | 1300 | 1400 | | |
| φHW | 300 | 300 | 400 | 450 | 450 | 450 | 450 | | |
| Aprox.wt. ^ | | | 218 | | | | | | |

| DIMENSIONAL DATA CLASS-1500 | | | | | | | | | |
|-----------------------------|-------|-------|-------|-------|-------|-------|-------|-------|--|
| DN | 50 | 65 | 80 | 100 | 150 | 200 | 250 | 300 | |
| NPS | 2 | 2 ½ | 3 | 4 | 6 | 8 | 10 | 12 | |
| L | 368 | 419 | 470 | 546 | 705 | 832 | 991 | 1130 | |
| L1 | 368 | 419 | 470 | 546 | 705 | 832 | 991 | 1130 | |
| φD | 216 | 244.2 | 267 | 311.1 | 394 | 483 | 584.2 | 673.1 | |
| T | 38.1 | 41.2 | 47.8 | 53.9 | 82.6 | 92 | 107.9 | 123.9 | |
| K(PCD) | 165.1 | 203.2 | 203.2 | 241.3 | 317.5 | 393.7 | 482.6 | 571.5 | |
| n | 08 | 08 | 08 | 08 | 12 | 12 | 12 | 16 | |
| φd | 25.4 | 31.8 | 31.8 | 35 | 38.1 | 44.5 | 50.8 | 53.8 | |
| H | 610 | 660 | 970 | 1140 | 1700 | 1690 | 1800 | 2200 | |
| φHW | 300 | 350 | 450 | 450 | 450 | 450 | 700 | 700 | |
| Aprox.wt. ^ | 42 | | | | | | | | |

| DIMENSIONAL DATA CLASS-2500 | | | | | | | |
|-----------------------------|-------|-------|-------|-------|-------|--------|--|
| DN | 50 | 65 | 80 | 100 | 150 | 200 | |
| NPS | 2 | 2 ½ | 3 | 4 | 6 | 8 | |
| L | 451 | 508 | 578 | 673.1 | 914.4 | 1022.4 | |
| L1 | 451 | 508 | 578 | 673.1 | 914.4 | 1022.4 | |
| φD | 235 | 266.7 | 304.8 | 355.6 | 482.6 | 552.5 | |
| T | 50.8 | 57.2 | 66.5 | 76.2 | 108 | 127 | |
| K(PCD) | 171.5 | 196.6 | 228.6 | 273 | 368.3 | 438.2 | |
| n | 08 | 08 | 08 | 08 | 08 | 12 | |
| φd | 28.5 | 31.8 | 35.1 | 41.2 | 53.9 | 53.9 | |
| H | 610 | 650 | 750 | 850 | 1100 | 1300 | |
| φHW | 350 | 350 | 450 | 450 | 700 | 700 | |
| Aprox.wt. ^ | | | | | | | |

Note : Add 3mm in face to face for RTJ flanges ends.

NOTE: The above data is subject to change without notice due to our continuing product improvement program. (^WEIGHT GIVEN IN KGS)