



Salient Features

- Flanged End to BS 10 Table 'J'.
- Automatic Shut Off Device in Water Arm.
- Available for both, Right Hand and Left Hand.
- High Quality Sleeve, Reinforced by metallic eye holes, is provided to avoid any clogging of passage.
- Each piece is fitted with self adjusting inverted taper plug (Stainless Steel) which forms a seal in the renewable moulded asbestos sleeve.
- Sleeve can easily be positioned by a rib which fits in the corresponding groove of the body.

Glass Tube is not provided with this product.

Suitable For

Steam
Water
Oil
Air
Gases

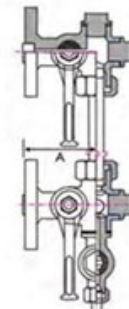
Test Pressure (Hydraulic) Shell : 48 kg/cm²g (700 psig) Test Pressure (Steam) Seat : 24.50 kg/cm²g (350 psig)
Maximum Working Temperature 425°C

Materials of Construction

Name of Part	Material	Specification
Upper & Lower Arms	Cast Steel	IBR 73-80 Gr.B
Bonnet & Plug	Stainless Steel	AISI 410
Drain Valve & Handle	Cast Steel	IBR 73-80 Gr.B
Nipple & Union Nut	Stainless Steel	AISI 410
Stem & Ball	Stainless Steel	AISI 410 / AISI 304
Sleeve	Moulded Asbestos	-
Cone	Synthetic Rubber	IS 5192-1
Nut	Carbon Steel	IS 1367
Name Plate	Brass / Aluminium	IS 410 / BS EN 10154
Glass Tube	Toughened Glass	BS 3463

Sizes / Dimensions

Inches	mm	A
1/2	15	84
3/4	20	99



Zoloto Industries
Zoloto House, 11th Milestone, Lambra, Nakodar Road,
Jalandhar - 144 026
Punjab, India

Phones : +91 181 4676666 (100 Lines)
Facsimile : +91 181 2792500 & 2251600
Email : zoloto@vsnl.com & sales@zolotovalves.com
Web : http://www.zolotovalves.com



JAYARAJ PIPE TRADERS

48/425 Q, JAYARAJ HOUSE, ELAMAKKARA, COCHIN 682 026
TEL. No. 0484 253 0785, 240 8008, 240 8009. FAX: 0484 253 0785
E-mail: jaypipescochin@gmail.com, sales@jayarajpipes.com
Web: www.jayarajpipes.com

