



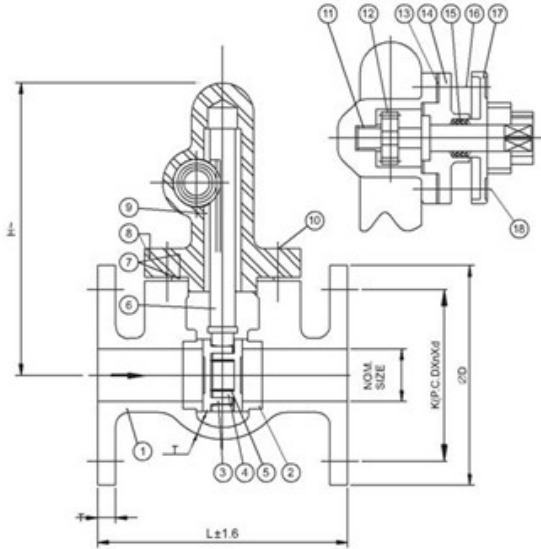
CAST STEEL PARALLEL SLIDE BLOW OFF VALVES

SPECIFICATIONS

PARALLEL SLIDE, RACK AND PINION OPERATED
RENEWABLE SEAT & DISC, FLANGED ENDS AS PER BS 10 TABLE
JFF.

CERTIFICATE

ITEMS CAN BE SUPPLIED WITH CERTIFICATE OF
MANUFACTURE AND TEST ON FORM III-C AS PER
REGULATION 269 OF IBR.



STANDARD MATERIAL COMBINATION

P.NO.	QTY.	DESCRIPTION	MATERIAL	SPECIFICATION
1	1	BODY	CAST STEEL	ASTM A 216 GRADE WCB
2	2	BODY SEAT RING	SS	ASTM A276 TYPE410+HARD FACING
3	1	FEMALE DISC	SS	ASTM A276 TYPE410+HARD FACING
4	1	MALE DISC	SS	ASTM A276 TYPE410+HARD FACING
5	1	SPRING	CARBON STEEL	IBR CLAUSE 307 TO 314
6	1	RACK	BRONZE	IBR CLAUSE 282 (a) iv Gr.B
7	1	GASKET	C.A.F.	IS 2712
8	1	BONNET	CAST STEEL	ASTMA 216 GRADE WCB
9	1	BUSH	BRONZE	IBR CLAUSE 282(a) iv Gr.B
10	TO SUIT	STUDS & NUTS	CARBON STEEL	BS 916
11	1	BUSH	BRONZE	IBR CLAUSE 282(a) iv Gr.B
12	1	PINION	BRONZE	IBR CLAUSE 282(a) iv Gr.B
13	1	GASKET	C.A.F.	IS 2712
14	1	STUFFING BOX	BRONZE	IBR CLAUSE 282(a) iv Gr.B
15	-	PACKING	GRAPHITE ASBESTOS	-----
16	4 EACH	STUDS & NUTS FOR STUFFING BOX	CARBON	BS 916
17	1	GLAND	BRONZE	IBR CLAUSE 282 (a) iv Gr.B
18	2 EACH	STUDS & NUTS FOR GLAND		BS 916

NOTE: The above data is subject to change without notice due to our continuing product improvement program.

(01)



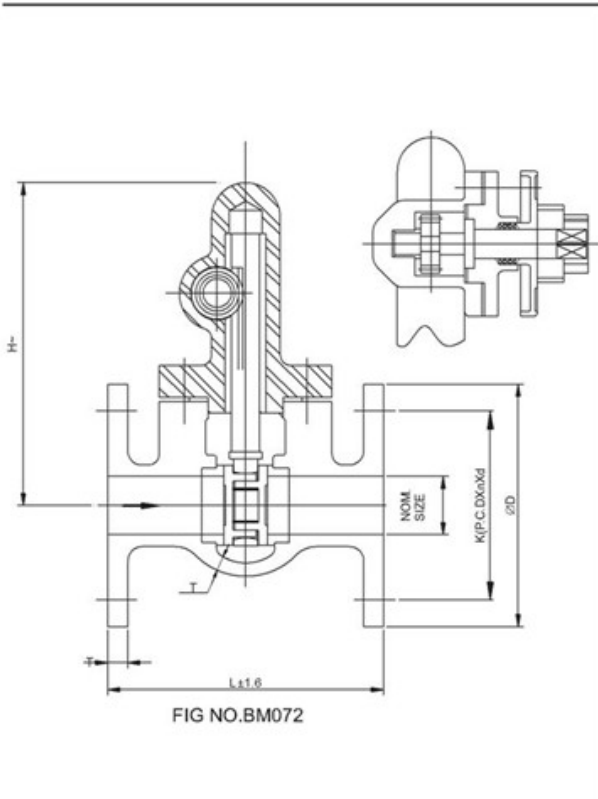
CAST STEEL PARALLEL SLIDE BLOW OFF VALVES

SALIENT FEATURES

(1) THE OUTSTANDING FEATURES OF THIS VALVE IS THAT IT MAINTAINS FLUID TIGHTNESS AND EASE OF OPERATION WITHOUT THE AID OF ANY WEDGING ACTION. A SPRING BETWEEN THE DISCS KEEP THEM IN CLOSE CONTACT WITH THE SEAT WHEN THE VALVE IS NOT UNDER PRESSURE AND THE SLIDE VALVE ACTION REMOVES ANY DIRT AND FOREIGN MATTER

FROM THE SEATING FACES.

(2) OPERATED BY MEANS OF A RACK & PINION IS SO ARRANGED AS TO GIVE FULL OPENING WITH A HALF TURN OF THE BOX KEY.
 (3) THE GLAND FORMS A LOCKING GUARD WHICH PREVENTS THE REMOVAL OF BOX KEY UNLESS THE VALVE IS CLOSED



INFORMATION TO BE SUPPLIED BY THE PURCHASER IN THE ENQUIRY/ORDER.

1. FIGURE NO. OR BOILER OPERATING PRESSURE.
2. SIZE OF THE VALVE.
3. STATE WHETHER FLANGES ARE TO BE SUPPLIED DRILLED. IF NOTHING IS SPECIFIED FLANGES ARE SUPPLIED IN UNDRILLED CONDITION.
4. WHETHER BOX KEY IS REQUIRED.

DIMENSIONAL DATA					
DN NPS	25 1	32 1 1/4	40 1 1/2	50 2	65 2 1/2
L	178	241	267	305	330
H	129	165	172	187	208
S	16	22	22	25.4	28.5
Aprox. Wt. ^	11.5	18.5	22.5	33	48.5
ITEM CODE NO.	BM 072 G	BM 072 H	BM 072 I	BM 072 J	BM 072 K
ITEM CODE NO.	MAX. WORKING PRESSURES	TEST PRESSURES			CODE
		SHELL TEST (HYDROSTATIC)	SEAT TEST		
BM 072	35 PSIG (24.1 BAR) AT800°F(427°C)		700 psig	(HYDROSTATIC)	(STEM)
		700 psig		250 psig	

NOTE: The above data is subject to change without notice due to our continuing product improvement program. (^WEIGHT GIVEN IN KGS)

(02)



JAYARAJ PIPE TRADERS

48/425 Q, JAYARAJ HOUSE, ELAMAKKARA, COCHIN 682 026
 TEL. No. 0484 253 0785, 240 8008, 240 8009. FAX: 0484 253 0785
 E-mail: jaypipescochin@gmail.com, sales@jayarajpipes.com
 Web: www.jayarajpipes.com

