



**Salient Features**

- Screwed Male End to BSP.
- Automatic Shut Off Device in Water Arm.
- Available for both, Right Hand and Left Hand.
- High Quality Sleeve, Reinforced by metallic eye holes provided to avoid any clogging of passage.
- Each piece is fitted with self adjusting inverted taper plug (Stainless Steel) which forms a seal in the renewable moulded asbestos sleeve.
- Sleeve can easily be positioned by a rib which fits in the corresponding groove of the body.

Glass Tube is not provided with this product.

**Suitable For**

Steam	<input checked="" type="checkbox"/>
Water	<input checked="" type="checkbox"/>
Oil	<input type="checkbox"/>
Air	<input type="checkbox"/>
Gases	<input type="checkbox"/>

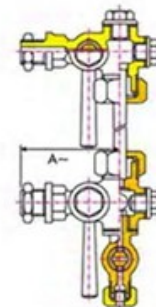
Test Pressure (Hydraulic) 35.15 kg/cm<sup>2</sup>g (500 psig) Working Pressure (Steam) 17.58 kg/cm<sup>2</sup>g (250 psig)  
Maximum Working Temperature 225°C

**Materials of Construction**

Name of Part	Material	Specification
Arms & Plug	Bronze	IBR 282 (a) (iv) Gr.B
Bonnet & Handle	Bronze	IBR 282 (a) (iv) Gr.B
Drain Valve	Bronze	IBR 282 (a) (iv) Gr.B
Nipple & Union Nut	Bronze	IBR 282 (a) (iv) Gr.B
Stem & Ball	Stainless Steel	AISI 410 & AISI 304
Sleeve	Moulded Asbestos	-
Cone	Synthetic Rubber	IS 5192-1
Nut	Carbon Steel	IS 1367
Name Plate	Brass / Aluminium	IS 410 / BS EN 10154
Glass Tube	Toughened Glass	BS 3463

**Sizes / Dimensions**

Inches	mm	A
1/2	15	118
3/4	20	118



Zoloto Industries  
Zoloto House, 11th Milestone, Lambra, Nakodar Road,  
Jalandhar - 144 026  
Punjab, India

Phones : +91 181 4676666 (100 Lines)  
Facsimile : +91 181 2792500 & 2251600  
Email : zoloto@vsnl.com & sales@zolotovalves.com  
Web : http://www.zolotovalves.com



**JAYARAJ PIPE TRADERS**

48/425 Q, JAYARAJ HOUSE, ELAMAKKARA, COCHIN 682 026  
TEL. No. 0484 253 0785, 240 8008, 240 8009. FAX: 0484 253 0785  
E-mail: jaypipescochin@gmail.com, sales@jayarajpipes.com  
Web: www.jayarajpipes.com

