

Outside Screw & Yoke Type Rising Stem
Sizes 1 1/2" to 36" Class-150, Sizes 1 1/2" to 24" Cass-300
Sizes 1 1/2" to 24" Class-600, Sizes 2" to 16" Cass-900
Sizes 2" to 12" Class-1500, Sizes 2" to 12" Cass-2500

On 12" & Smaller Valves yoke is cast integral with bonnet

TRIM MATERIAL COMBINATION (ON REQUEST)					
Trim No.	Seat ring Face Part No.2	Wedge Seat Face Part No.3	Stem Part No.4	Backseat Bush Part No.7	Lantern Ring Part No.9
1	F6a/13%Cr.	F6a/13%Cr.	F6a/AISI410	F6a/AISI410	F6a/AISI410
2	F304	F304	F304/AISI304	F304/AISI304	F304/AISI304
5	STELLITE	STELLITE	F6a/AISI410	F6a/AISI410	F6a/AISI410
8	STELLITE	F6a/13%Cr.	F6a/AISI410	F6a/AISI410	F6a/AISI410
9	MONEL	MONEL	MONEL	MONEL	MONEL
10	F316	F316	F316/AISI316	F316/AISI316	F316/AISI316
13	ALLOY 20	ALLOY 20	ALLOY 20	ALLOY 20	ALLOY 20

OTHER TRIM COMBINATION OF API 600 CAN BE PROVIDED ON REQUEST. LANTERN RING CAN BE PROVIDED IF REQUIRED EXCEPT FOR CL-150.

Thrust Bearing

Class 150-DN 250 & above
 Class 300-DN 200 & above
 Class 600-DN 100 & above
 Class 900-DN 100 & above
 Class 1500-DN 80 & above
 Class 2500-DN 80 & above

STANDARD MATERIAL COMBINATION												
P. NO.	PART DESCRIPTION	Carbon steel to ASTM		Alloy steel to ASTM					Stainless steel to ASTM			
		Type WCB	Type LCB	Type WC1	Type WC6	Type WC9	Type C5	Type C12	Type CF8	Type CF8M	Type CF3	Type CF3M
1	BODY	A216 WCB	A352 LCB	A217 WC1	A217 WC6	A217 WC9	A217 C5	A217 C12	A351 CF8	A351 CF8M	A351 CF3	A351 CF3M
5	GASKET	Stainless steel + Graphoil										
6	BONNET	A216 WCB	A352 LCB	A217 WC1	A217 WC6	A217 WC9	A217 C5	A217 C12	A351 CF8	A351 CF8M	A351 CF3	A351 CF3M
8	PACKING	To Suit Service conditions										
10	GLAND	A182 F6a	A182 F304	A182 F6a	A182 F6a	A182 F6a	A182 F6a	A182 F6a	F-304	F-316	F-304L	F-316L
11	GLAND FLANGE	A216 WCB	A352 LCB	A217 WC1	A217 WC6	A217 WC9	A217 C5	A217 C12	A351 CF8	A351CF8M	A351 CF3	A351CF3M
12	NUTS	A194 2H	A194 Gr.4	A194 Gr.4	A194 Gr.4	A194 Gr.4	A194 Gr.4	A194 Gr.4	A194 Gr.8	A194 Gr.8	A194 Gr.8	A194 Gr.8
13	YOKE SLEEVE	Al. Bronze BS1982 CC333G or Ni - resist to A439 D2										
14	OIL SEAL	EPDM/BUNA 'N' RUBBER										
15	THRUST BEARING	SKF OR EQV.										
16	LUBRICATOR	STEEL										
17	YOKE SLEEVE RETAINING NUT	STEEL										
18	LOCKING SCREW	STEEL										
19	HANDWHEEL	D1 A536 80-55-D6 OR MI 1S 2108 BM 290/ASTMA338										
20	HANDWHEEL RETAINING NUT	STEEL										
21	STUDS	A193 B7	A320 L7	A193 B16	A193 B16	A193 B16	A193 B16	A193 B16	A193 B8	A193 B8	A193 B8	A193 B8

NOTE: The above data is subject to change without notice due to our continuing product improvement program.



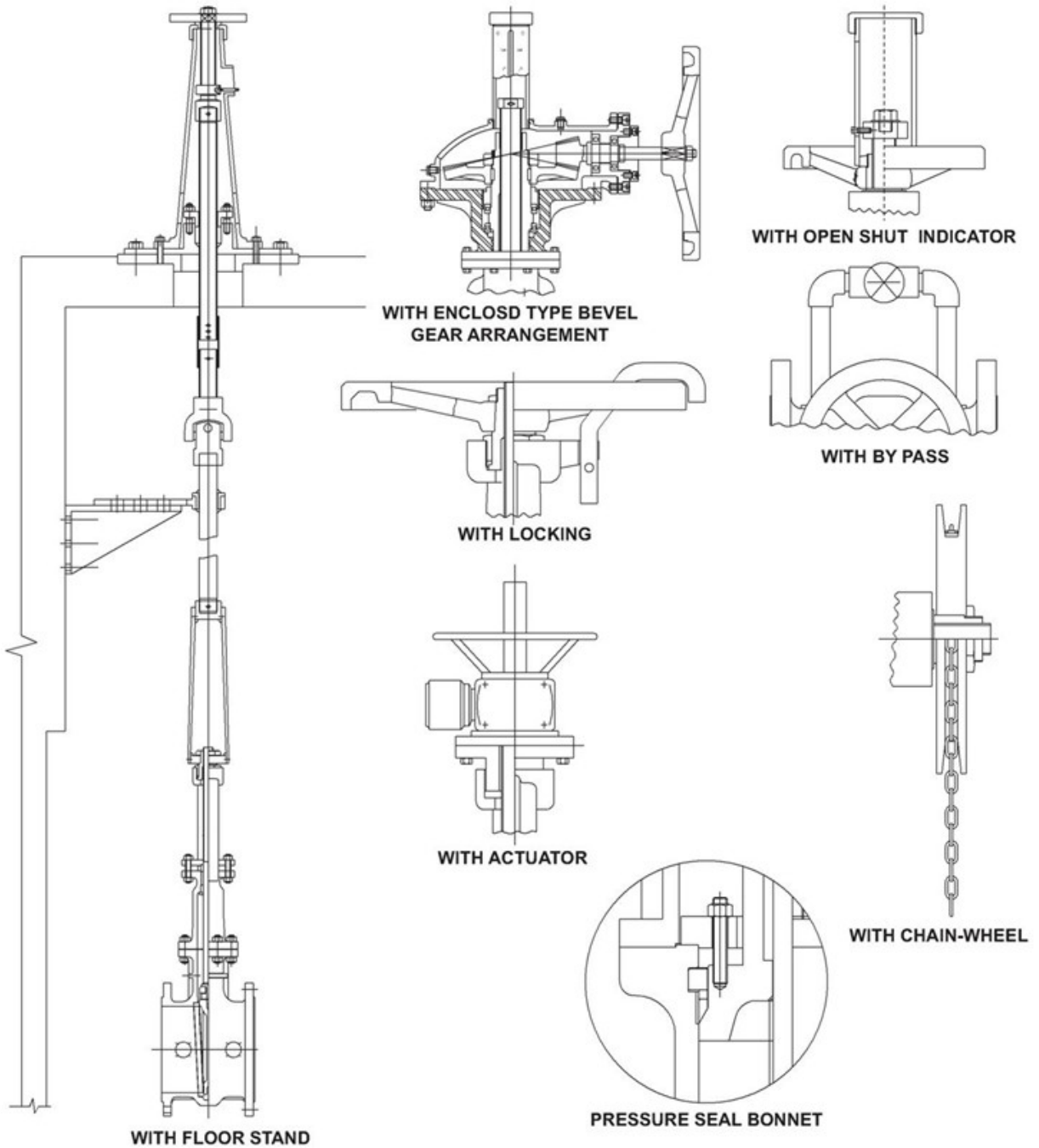
JAYARAJ PIPE TRADERS

48/425 Q, JAYARAJ HOUSE, ELAMAKKARA, COCHIN 682 026
 TEL. No. 0484 253 0785, 240 8008, 240 8009. FAX: 0484 253 0785
 E-mail: jaypipescochin@gmail.com, sales@jayarajpipes.com
 Web: www.jayarajpipes.com





*** ACCESSORIES ***



VALVE WITH EXTENDED BONNET (LOW TEMP. SERVICE) CAN ALSO BE SUPPLIED.

(02)



JAYARAJ PIPE TRADERS

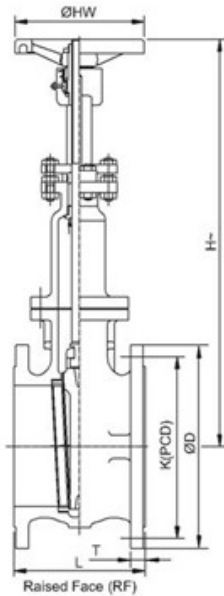
48/425 Q, JAYARAJ HOUSE, ELAMAKKARA, COCHIN 682 026
 TEL. No. 0484 253 0785, 240 8008, 240 8009. FAX: 0484 253 0785
 E-mail: jaypipescochin@gmail.com, sales@jayarajpipes.com
 Web: www.jayarajpipes.com



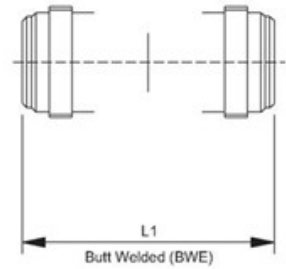
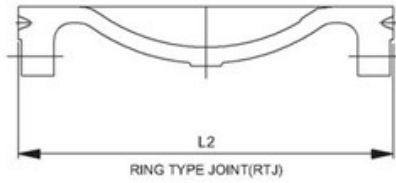


CAST STEEL GATE VALVES- API 600

CLASS-150,300,600,900,1500 & 2500



n = No. of holes
 φd = Dia. of holes



NOTE:

- 1) FOR CLASS 900, 1500 & 2500 PRESSURE SEAL BONNET VALVE CAN ALSO BE SUPPLIED ON REQUEST.
 - 2) CLASS 150 & 300 FLANGES ARE FURNISHED WITH 1.6mm RAISED FACE (f) WHICH IS INCLUDED IN MIN FLANGE THICKNESS (T). CLASS 600 & ABOVE FLANGES ARE FURNISHED WITH 6.4mm RAISED FACE (f) WHICH IS ADDITIONAL TO THE FLANGE THICKNESS (T)
- *With enclosed type bevel gear arrangement**

DIMENSIONAL DATA CLASS-150

DN	40	50	65	80	100	125	150	200	250	300	350	400	450	500	550	600	650	700	750	900
NPS	1 1/2	2	2 1/2	3	4	5	6	8	10	12	14	16	18	20	22	24	26	28	30	36
L	165	178	190	203	229	254	267	292	330	356	381	407	432	457	508	508	559	609.6	609.6	711
L1	165	216	241	283	305	381	403	419	457	502	572	610	660	711	508	813	--	--	--	--
kD	127	152	178	190	229	254	279	343	406	483	533	597	635	698	748.3	813	786	836.6	984.3	1057
T	14.3	15.9	17.5	19	23.8	23.8	25.4	28.6	30.2	31.8	34.9	36.5	39.7	42.9	46	47.6	41.1	44.5	74.7	53.4
K(PCD)	98.4	120.6	139.7	152.4	190.5	215.9	241.3	298.4	362	431.8	476.2	539.8	577.8	635	692.1	749.3	744.5	795.3	914.4	1009.7
n	04	04	04	04	08	08	08	08	12	12	12	16	16	20	20	20	20	20	20	20
kd	15.9	19	19	19	19	22.2	22.2	22.2	25.4	25.4	28.6	28.6	31.8	31.8	34.9	34.9	22.4	22.3	35.1	25.4
H	326	335	365	370	450	555	596	746	915	1110	1175	1935*	2166*	2380*	2762*	2767*	3056*	3236*	3469*	4120*
ØHW	210	210	210	235	255	310	310	400	460	500	450	450	450	450	450	450	450	450	450	700
Aprox.wt. ^	16.6	20	28	32.5	51.2	74	85	136	189	289	467	620	738	970	1045	1290	1513	1735	1910	2528

DIMENSIONAL DATA CLASS-300

DN	40	50	65	80	100	125	150	200	250	300	350	400	450	500	600					
NPS	1 1/2	2	2 1/2	3	4	5	6	8	10	12	14	16	18	20	24					
L	191	216	241	283	305	381	403	419	457	502	762	838	914	991	1143					
L1	191	216	241	283	305	381	403	419	457	502	762	838	914	991	1143					
φD	156	165	190	210	254	279	318	381	444	521	584	648	711.2	747.7	914.4					
T	20.6	22.2	25.4	28.6	31.8	34.9	36.5	41.3	47.6	50.8	54	57.2	60.5	63.5	70					
K(PCD)	114.3	127	149.2	168.3	200	235	269.9	330.2	387.4	450.8	514.4	571.5	628.7	685.8	812.8					
n	04	08	08	08	08	08	12	12	16	16	20	20	24	24	24					
φd	22.2	19	22.2	22.2	22.2	22.2	22.2	25.4	28.6	31.8	31.8	35	35	35	41					
H	357	382	416	432	520	786	742	919	1169*	1237*	1463*	--*	--*	--*	--*					
φHW	210	210	210	225	310	310	400	450	450	450	450	450	450	450	450					
Aprox.wt. ^	24.5	29	42	55	80.5	161.6	1676	263	458	610	920	1056	1145	1730	2730					

Note : Add 3mm in face to face for RTJ flanges ends.

NOTE: The above data is subject to change without notice due to our continuing product improvement program. (^WEIGHT GIVEN IN KGS)



JAYARAJ PIPE TRADERS

48/425 Q, JAYARAJ HOUSE, ELAMAKKARA, COCHIN 682 026
 TEL. No. 0484 253 0785, 240 8008, 240 8009. FAX: 0484 253 0785
 E-mail: jaypipescochin@gmail.com, sales@jayarajpipes.com
 Web: www.jayarajpipes.com





DIMENSIONAL DATA CLASS-600															
DN	40	50	65	80	100	125	150	200	250	300	350	400	450	500	600
NPS	1 ½	2	2 ½	3	4	5	6	8	10	12	14	16	18	20	24
L	241	292	330	356	432	508	559	660	787	838	889	990	1092	1194	1397
L1	241	292	330	356	432	508	559	660	787	838	889	990	1092	1194	1397
φD	156	165	190	210	273	330	356	419	508	559	603.5	686	743	813	940
T	22.2	25.4	28.6	31.8	38.1	44.4	47.6	55.6	63.5	66.5	70	76.2	82.6	89	101.6
K(PCD)	114.3	127	149.2	168.3	216	266.7	292.1	349.2	431.8	489	527	603.2	654	724	838.2
n	04	08	08	08	08	08	12	12	16	20	20	20	20	24	24
φd	22.2	19	22.2	22.2	25.4	28.6	28.6	31.8	34.9	34.9	38.1	41.1	44.5	44.5	50.8
H	350	427	477	537	623	750	890	1143	1040	1300	2100*	2155*	2516*	2445*	3257*
φHW	229	229	229	254	356	406	508	508	610	686	711	765	765	765	765
Aprox.wt. ^	32.9	46	75.240	80	153	264	298.5	677	1015	1321	1825	2287	2920	4500	--

DIMENSIONAL DATA CLASS-900										
DN	50	80	100	150	200	250	300	350	400	
NPS	2	3	4	6	8	10	12	14	16	
L	368	381	457.5	610	736.6	838	965	1029	1130	
L1	368	381	457.5	610	736.6	838	965	1029	1130	
φD	216	241.3	292.1	381	469.9	546.1	609.6	641.3	704.8	
T	38.1	38.1	44.5	55.6	63.5	69.8	79.3	85.9	88.9	
K (PCD)	165.1	190.5	234.5	317.5	393.7	469.9	533.4	558.8	615.9	
n	08	08	08	12	12	16	20	20	20	
φd	25.4	25.4	31.8	31.8	38.1	38.1	38.1	41.1	44.4	
H	480	718	815	1270	1530	1780	1885	2030	2261	
φHW	300	300	400	450	450	450	450	450	450	
Aprox.wt. ^	88	182	275	478						

DIMENSIONAL DATA CLASS-1500									
DN	50	65	80	100	125	150	200	250	300
NPS	2	2 ½	3	4	5	6	8	10	12
L	368	419	470	546	673	705	832	990.6	1130
L1	368	419	470	546	673	705	832	990.6	1130
φD	216	244.5	267	311.5	374.7	394	483	584.2	673.1
T	38.1	41.2	47.8	53.8	73.2	82.6	92	108	124
K (PCD)	165.1	195.5	203.2	241.3	292.1	317.5	393.7	482.6	571.5
n	08	08	08	08	08	12	12	12	16
φd	25.4	28.4	31.8	35.1	41.1	38.1	44.5	50.8	53.8
H	600	700	780	920	1060	1200	1380	1620	1860
φHW	300	350	400	450	500	600	750	850	960
Aprox.wt. ^									

Note : Add 3mm in face to face for RTJ flanges ends.

NOTE: The above data is subject to change without notice due to our continuing product improvement program. (^WEIGHT GIVEN IN KGS)

(04)



JAYARAJ PIPE TRADERS

48/425 Q, JAYARAJ HOUSE, ELAMAKKARA, COCHIN 682 026
 TEL. No. 0484 253 0785, 240 8008, 240 8009. FAX: 0484 253 0785
 E-mail: jaypipescochin@gmail.com, sales@jayarajpipes.com
 Web: www.jayarajpipes.com





DIMENSIONAL DATA CLASS-2500									
DN	50	65	80	100	150	200	250	300	
NPS	2	2 ½	3	4	6	8	10	12	
L	451	508	578	673.1	914.4	1022.4	1270	1422.4	
L1	451	508	578	673.1	914.4	1022.4	1270	1422.4	
φD	235	266.7	304.8	355.6	482.6	552.5	673.1	762	
T	50.8	57.2	66.5	76.2	108	127	165.1	184.2	
K (PCD)	171.5	196.9	228.6	273	368.3	438.2	539.2	619.2	
n	08	08	08	08	08	12	12	12	
φd	28.5	31.8	35	41.3	53.9	53.9	66.5	73.2	
H	600	700	1110	1300	1385	1760	2030	2220	
φW	300	350	400	450	650	700	700	700	
Aprox.Wt. ^									

TEST PRESSURES						
CLASS	SHELL TEST (HYDROSTATIC)		SEAT TEST			
			HYDROSTATIC		PNEUMATIC	
150	30 Bar g	450 Psi g	22 Bar g	325 Psi g	6.9 bar	100 Psi g
300	76 Bar g	1125 Psi g	55 Bar g	825 Psi g	6.9 bar	100 Psi g
600	150 Bar g	2225 Psi g	110 Bar g	1650 Psi g	6.9 bar	100 Psi g
900	231 Bar g	3352 Psi g	170 Bar g	2440 Psi g	6.9 bar	100 Psi g
1500	384 Bar g	5568 Psi g	281 Bar g	4075 Psi g	6.9 bar	100 Psi g
2500	639 Bar g	9270 Psi g	468 Bar g	6790 Psi g	6.9 bar	100 Psi g

Note : Add 3mm in face to face for RTJ flanges ends.

NOTE: The above data is subject to change without notice due to our continuing product improvement program. (^ WEIGHT GIVEN IN KGS)

(05)



JAYARAJ PIPE TRADERS

48/425 Q, JAYARAJ HOUSE, ELAMAKKARA, COCHIN 682 026
 TEL. No. 0484 253 0785, 240 8008, 240 8009. FAX: 0484 253 0785
 E-mail: jaypipescochin@gmail.com, sales@jayarajpipes.com
 Web: www.jayarajpipes.com

