



**BRONZE PARALLEL SLIDE BLOW OFF VALVES**

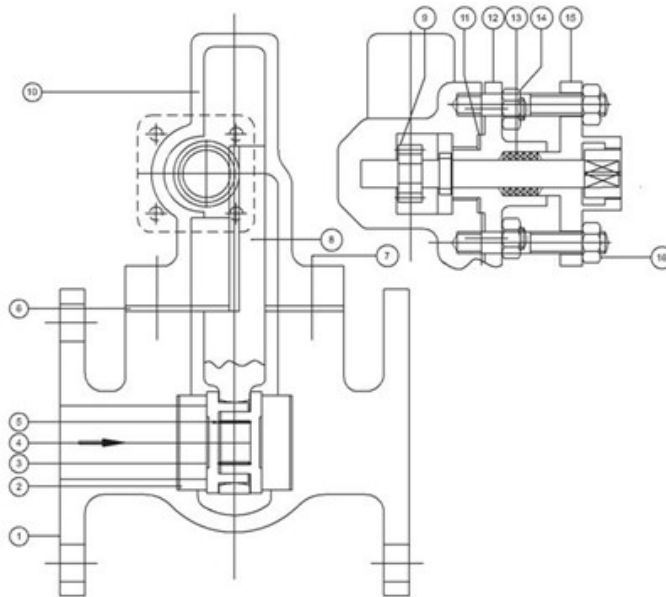


FIG NO. BM067/ BM068

STANDARD MATERIAL COMBINATION				
P.NO.	QTY.	DESCRIPTION	MATERIAL	SPECIFICATION
1	1	BODY	BRONZE	IBR CLAUSE 282 (a) iv) Gr.B
2	2	BODY SEAT RING	SS	ASTM A276 SS 410+ HARD FACING
3	1	MALE DISC	SS	ASTM A276 SS 410+ HARD FACING
4	1	FEMALE DISC	SS	ASTM A276 SS 410+ HARD FACING
5	1	SPRING	CARBON STEEL	IBR CLAUSE 307 TO 314
6	1	GASKET	C.A.F	IS 2712
7	TO SUIT	STUDS & NUTS	CARBON STEEL	BS 916
8	1	RACK	BRONZE	IBR CLAUSE 282 (a) (iv) Gr. B
9	1	PINION	BRONZE	IBR CLAUSE 282 (a) (iv) Gr. B
10	1	BONNET	BRONZE	IBR CLAUSE 282 (a) (iv) Gr. B
11	1	GASKET	C.A.F	IS 2712
12	1	STUFFING BOX	BRONZE	IBR CLAUSE 282 (a) (iv) Gr. B
13	-	PACKING	GRAPHITED ASBETOS	-----
14	2 EACH	STUDS & NUTS	CARBON STEEL	BS 916
15	1	GLAND	BRONZE	IBR CLAUSE 282 (a) (iv) Gr. B
16	4 EACH	STUDS & NUTS	CARBON STEEL	BS 916

NOTE: The above data is subject to change without notice due to our continuing product improvement program.

(01)

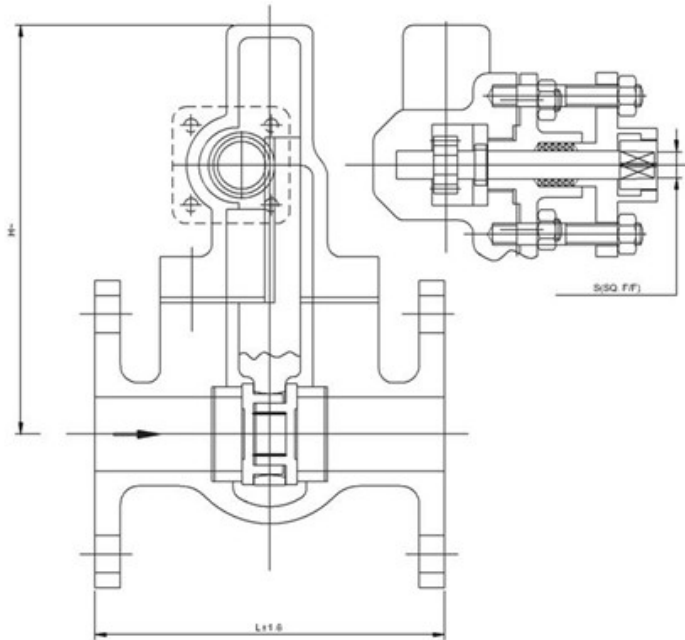


**BRONZE LINK TYPE PARALLEL SLIDE BLOW OFF VALVES**

**SPECIFICATIONS**  
PARALLEL SLIDE, RACK AND PINION OPERATED  
RENEWABLE SEAT & DISC FLANGED ENDS.

**CERTIFICATE**  
ITEMS CAN BE SUPPLIED WITH CERTIFICATE OF  
MANUFACTURE AND TEST ON FORM III-C AS PER  
REGULATION 269 OF IBR.

**SALIENT FEATURES**  
(1) OPERATION BY MEANS OF A RACK & PINION IS SO  
ARRANGES AS TO GIVE FULL OPENING WITH A HALF  
TURN OF THE BOX KEY.  
(2) THE GLAND FORMS A LOCKING GUARD WHICH  
PREVENTS THE REMOVAL OF BOX KEY UNLESS THE  
VALVE IS CLOSED



**CATALOGUE FIG NO.**

ITEM	FIG NO.	END DETAILS
BRONZE PARALLEL SLIDE BLOW OFF VALVE MAX. BOP 250 PSIG (17.24 bar)	BM 068	FLANGED ENDS TO BS 10 TABLE H

**DIMENSIONAL DATA**

	20	25	32	40	50	65	80
DN	20	25	32	40	50	65	80
NPS	3/4	1	1 1/4	1 1/2	2	2 1/2	3
L	165	165	184	162	175	184	238
H	140	140	158	178	210	242	325
S	16	16	17.5	19	22	25.4	32
Aprox. Wt. ^	8.910	10.000	11.910	13.500	20.500	31.700	35.000
ITEM CODE NOS.	BM068 F	BM068 G	BM068 H	BM068 I	BM068 J	BM068 K	BM068 L
ITEM CODE NOS.	MAX WORKING PRESSURES	TEST PRESSURES				CODE	
		SHELL TEST (HYDROSTATIC)	SEAT TEST				
			(HYDROSTATIC)	(STEAM)			
BM 068	250 psig (17.24 bar) AT 4350F (225°C)	500 psig	500 psig	250 psig	REGULATION		

NOTE: The above data is subject to change without notice due to our continuing product improvement program. (^ WEIGHT GIVEN IN KGS)

(02)



**JAYARAJ PIPE TRADERS**

48/425 Q, JAYARAJ HOUSE, ELAMAKKARA, COCHIN 682 026  
TEL. No. 0484 253 0785, 240 8008, 240 8009. FAX: 0484 253 0785  
E-mail: jaypipescochin@gmail.com, sales@jayarajpipes.com  
Web: www.jayarajpipes.com

